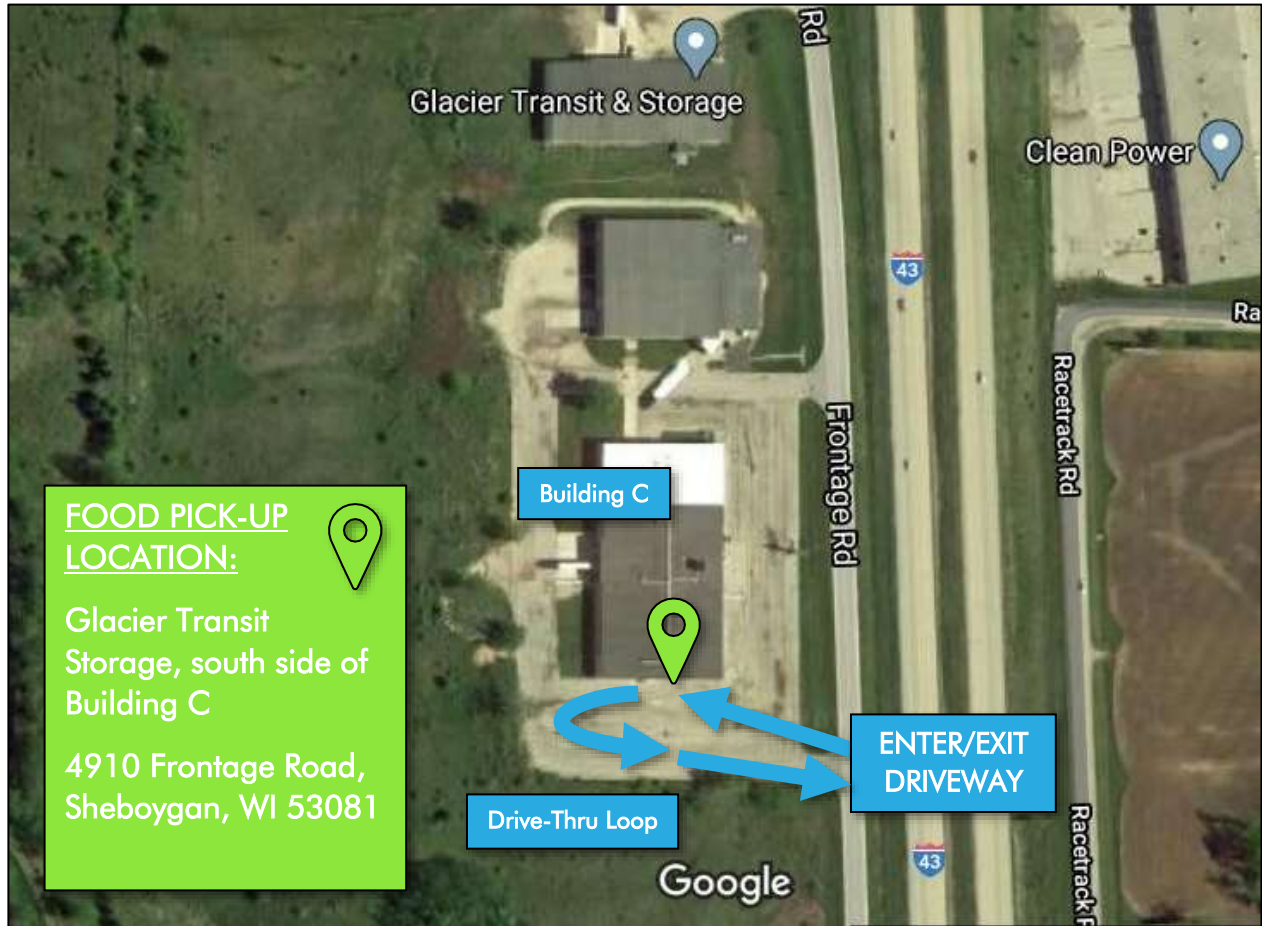


# Sheboygan Cares Drive-Thru Food Pantry Map and Details



Important Details	
<b>Hours</b>	Mondays and Fridays, 10:00 AM – 12:00 PM, beginning Friday, May 29
<b>Other Details</b>	<ul style="list-style-type: none"> <li>• Open to public. No registration required.</li> <li>• Follow directions of posted signs and volunteers to safely drive up to south side of Building C.</li> <li>• Volunteers with masks and gloves will place boxes in your vehicle's trunk.</li> <li>• Please do not exit your vehicle at any time.</li> <li>• Boxes include fresh produce, meat, and dairy items. Sheboygan County Food Bank is also providing non-perishable food and personal care items.</li> </ul>

***Sheboygan Cares Drive-Thru Food Pantry is coordinated by Sheboygan County Food Bank in response to COVID-19. Sheboygan County Food Bank partnered with the USDA to distribute healthy, fresh food – free of charge – to our neighbors who need emergency food.***